

## SPARE PARTS EXPLODED VIEW GAS WALL BOILERS

Model

### **R 40 / THISION L**

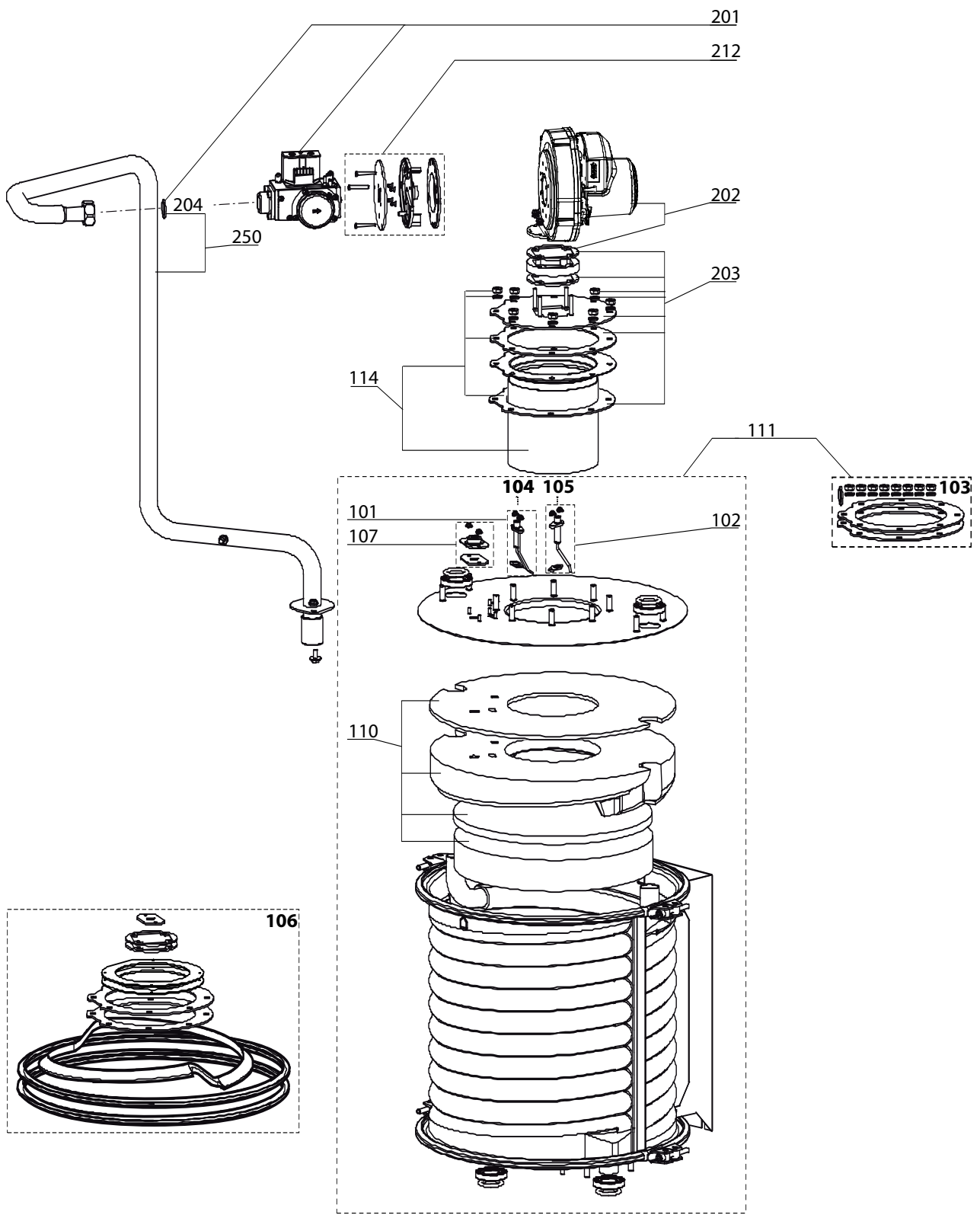
R8203315-01EN - Edition 01 - 25/05/2011

R40

Domestic Gas Boilers

3581182		THISION L 65	12/10	...
3581183		THISION L 85	12/10	...
3581184		THISION L 100	12/10	...
3581185		THISION L 120	12/10	...
3581186		THISION L 145	12/10	...

Reference	Ind.	Model type	Begin	End
-----------	------	------------	-------	-----

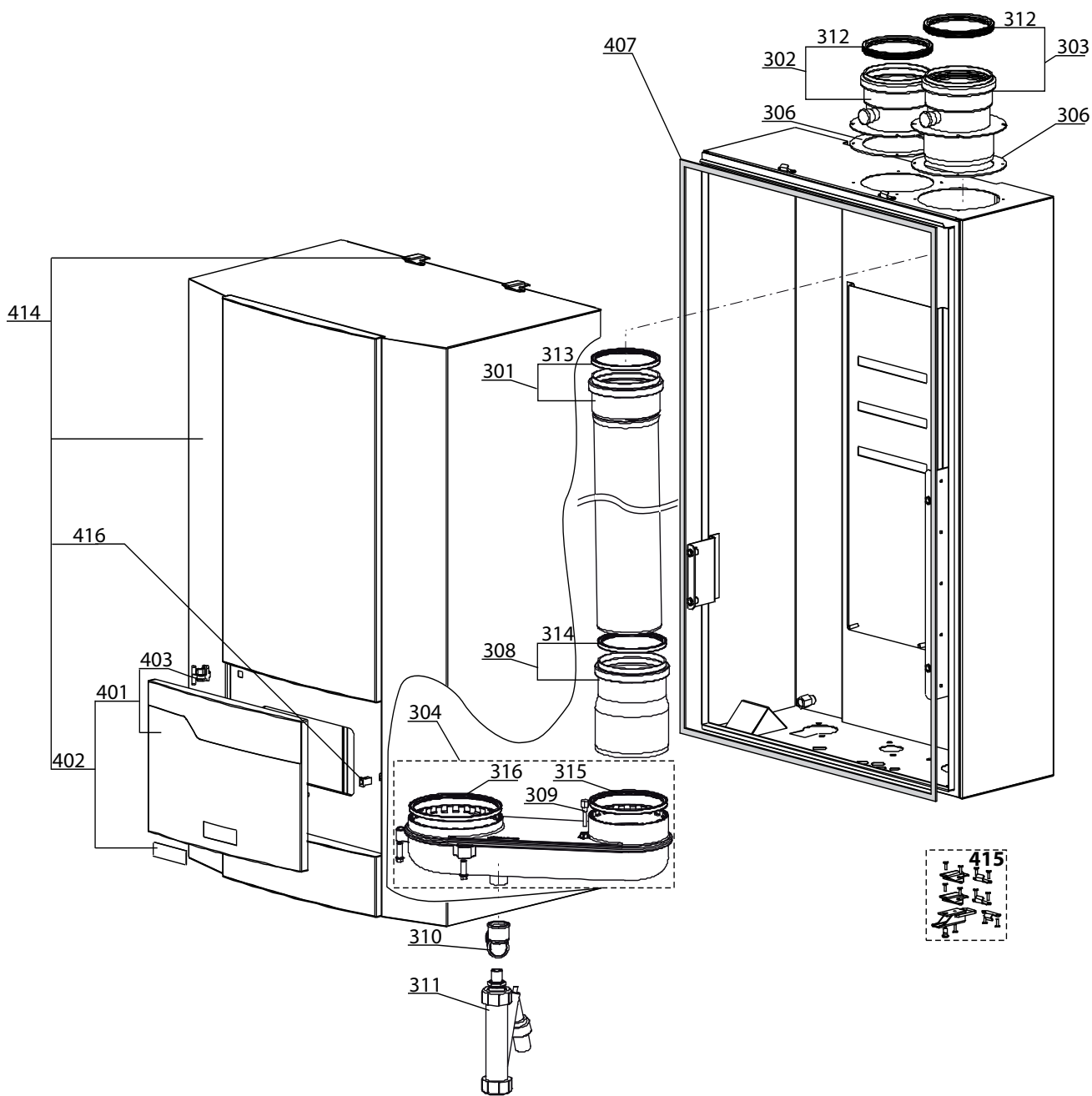


THISION L

Key N	Description	Manf. Pt. N	Type	THISION L					Manf. date	
				65	85	100	120	145	from	to
<b>0100</b>	<b>BURNER ASSEMBLY</b>									
0101	IGNITION ELECTRODE+GASKET	64201725		•	•	•	•	•		
0102	IONIZATION ELECTRODE+GASKET	64201718		•	•	•	•	•		
0103	GASKET (/Burner)	64201744		•	•					
	GASKET (/Burner)	64201745				•	•	•		
0104	EARTH WIRE (GREEN/YELLOW)	64201739		•	•	•	•	•		
0105	BLACK ELECTRODE CABLE	64201729		•	•	•	•	•		
0106	GASKETS SET	64201691		•	•					
	GASKETS SET	64201692				•	•			
	GASKETS SET	64201693						•		
0107	CONVERSION KIT INSPECTION WINDOW	64201730		•	•	•	•	•		
0110	INSULATION	64201685		•	•					
	INSULATION	64201686				•	•	•		
0111	HEAT EXCHANGER 65Kw	64201710		•						
	HEAT EXCHANGER 85Kw	64201711			•					
	HEAT EXCHANGER 100Kw	64201712				•				
	HEAT EXCHANGER 120Kw	64201713					•			
	HEAT EXCHANGER 145kw	64201714						•		
0114	BURNER 65Kw	64201751		•						
	BURNER 85Kw	64201752			•					
	BURNER 100Kw	64201753				•				
	BURNER 120Kw	64201754					•			
	BURNER 145kw	64201755						•		
<b>0200</b>	<b>GAS SECTION</b>									
0201	GAS VALVE	64201732		•						
	GAS VALVE	64201733			•	•	•	•		
0202	FAN ASSY 65Kw	64201734		•						
	FAN ASSY 85-100Kw	64201735			•	•				
	FAN ASSY 120Kw	64201736					•			
	FAN ASSY 145kw	64201737						•		
0203	SPACER+GASKET 65-85Kw	64201771		•	•					
	SPACER+GASKET 100-120Kw	64201772				•	•			
	SPACER+GASKET 145Kw	64201773						•		
0204	GASKET	64201722		•						
	GASKET	64201723			•	•	•	•		
0212	TURBINE 65Kw	64201740		•						
	TURBINE 85→120Kw	64201741			•	•	•			
	TURBINE 145kw	64201742						•		
0250	GAS PIPE 65Kw	64201746		•						
	GAS PIPE 85Kw	64201747			•					
	GAS PIPE 100Kw	64201748				•				
	GAS PIPE 120Kw	64201749					•			
	GAS PIPE 145kw	64201750						•		

THISION L

Domestic Gas Boilers



THISION L

Key N	Description	Manf. Pt. N	Type	THISION L					Manf. date	
				65	85	100	120	145	from	to
<b>0300</b>	<b>FLUE CONNECTION</b>									
0301	FLUE DUCT FIRST SECTION D:110mm	64201695		•	•					
	FLUE DUCT FIRST SECTION D:110mm	64201696				•	•			
	FLUE DUCT FIRST SECTION D:125mm	64201698						•		
0302	AIR VERTICAL ADAPTATER D:100mm	64201699		•	•	•	•			
	AIR VERTICAL ADAPTATER D:130mm	64201701						•		
0303	FLUEGAS VERTICAL ADAPTATER D:100mm	64201700		•	•	•	•			
	FLUEGAS VERTICAL ADAPTATER D:130mm	64201702						•		
0304	RECUPERATOR OF CONDEN.	64201687		•	•					
	RECUPERATOR OF CONDEN.	64201688				•	•	•		
0306	GASKET (Qt:2)	64201719		•	•	•	•			
	GASKET (Qt:2)	64201720						•		
0308	FLUE DUCT FIRST SECTION D:110-125mm	64201697				•	•			
0309	SONDA TEMPERATURA	64201645		•	•	•	•	•		
0310	DISCHARGE PIPE (CONDENSATE)	64201690		•	•	•	•	•		
0311	TRAP	64201689		•	•	•	•	•		
0312	GASKET D:100mm	64201756		•	•	•	•			
	GASKET D:130mm	64201759						•		
0313	GASKET D:110mm	64201757		•	•	•	•			
	GASKET D:125mm	64201758						•		
0314	GASKET D:110mm	64201757				•	•			
0315	GASKET D:110mm	64201757		•	•					
	GASKET D:125mm	64201758				•	•	•		
0316	GASKET D:150mm	64201760		•	•	•	•	•		
<b>0400</b>	<b>SEALED CASE</b>									
0401	BLUE CONTROL PANEL	64201743		•	•	•	•	•		
0402	TRANSPARENT FRONT COVER	65105749		•	•	•	•	•		
0403	HINGE	65105784		•	•	•	•	•		
0407	GASKET L:3.5m	64201721		•	•	•	•	•		
0414	FRONT PANEL 65—>85kw ELCO	64201765		•	•					
	FRONT PANEL 100—>145kw ELCO	64201767				•	•	•		
0415	CLIP	64201731		•	•	•	•	•		
0416	PUSH (CASE DOOR)	12035603		•	•	•	•	•		

THISION L

Domestic Gas Boilers



THISION L

Key N	Description	Manf. Pt. N	Type	THISION L					Manf. date	
				65	85	100	120	145	from	to
<b>0500</b>	<b>FLOW GROUP</b>									
0501	DRAIN SCREW 3/8	64201694		•	•	•	•	•		
0502	MONOTUBE	64201703		•						
	MONOTUBE	64201704			•					
	MONOTUBE	64201705				•				
	MONOTUBE	64201706					•			
	MONOTUBE	64201707						•		
0503	GASKET KIT	64201683		•	•					
	GASKET KIT	64201684				•	•	•		
0551	PIPE (C.H. FLOW) 65→85kw	64201762		•	•					
	PIPE (C.H. FLOW) 100→145kw	64201763				•	•	•		
0580	GASKET	64201769		•	•					
	GASKET	64201770				•	•	•		
<b>0600</b>	<b>RETURN GROUP</b>									
0601	PIPE (C.H. RETURN)	64201715		•	•					
	PIPE (C.H. RETURN)	64201716				•	•	•		
0602	MONOTUBE	64201708		•	•					
	MONOTUBE	64201709				•	•	•		
0603	SONDA TEMPERATURA	64201645		•	•	•	•	•		
<b>0800</b>	<b>ELECTRICAL BOX</b>									
0802	FUSE T6.3 A H 5X50 250V (Qt:2)	64201792		•	•	•	•	•		
0803	SWITCH ON/OFF WITH ROUND LENS LIGHT	64200294		•	•	•	•	•		
0807	TRANSFORMER	64201717		•	•	•	•	•		
0814	COVER FRONT	64201768		•	•	•	•	•		
0815	CONTROL BOX LMS14.319A109	64201738		•	•	•	•	•		
0816	MODULE HMI AVS37.394/167 ELCO	64201727		•	•	•	•	•		
0817	CABLE (/AVS37.394)	64201726		•	•	•	•	•		
0822	ADJUSTING KNOP REGULATION	65000588		•	•	•	•	•		
0825	PRESSURE GAUGE 1/4 0-8 Bars	64201761		•	•	•	•	•		
0829	BLACK ELECTRODE CABLE	64201729		•	•	•	•	•		
0830	EARTH WIRE (GREEN/YELLOW)	64201739		•	•	•	•	•		
0831	WIRE ASSEMBLY (black-blue-yellow)	64201724		•	•	•	•	•		

THISION L

Domestic Gas Boilers

## LIST OF THE ABBREVIATIONS

HW .....	: Hot water.
CW .....	: Cold water.
C .....	: Ceramic resistance (normal heating).
Ca .....	: Ceramic resistance (accelerated heating)
TP .....	: Immersion heater.
1F .....	: With fittings.
2F .....	: Without fittings.
3F .....	: With fittings and another outlet connection.
AMI .....	: With mixing valve.
SMI .....	: Without mixing valve.
PUISS .....	: Power of th appliance.
PN .....	: Appliance with normal pression.
LP .....	: Appliance with low pression.
PV .....	: Appliance with variable power.
PF .....	: Appliance with fixed power..

## IDENTIFICATION PLATE

### SERIAL NUMBER

<b>10 Characters :</b>	04 05 125 011	
		Sequential number
		Manufacturing day
		Year of manufacture
<b>21 Characters :</b>	3000115 XX 08115 0000001	
Product reference		Sequential number
		Year (08) / Manufacturing day (115)

The indications mentioned on the prices, commercial or technical literature and the scheme are written for your guidance and are available at a given time. The CONSTRUCTOR retains the power to modify the presentation, the form, the size, the conception or the material of the products.